

# **Green Hill Solar Farm**

## **EN010170**

### **Waterbodies River Basin Management Plan**

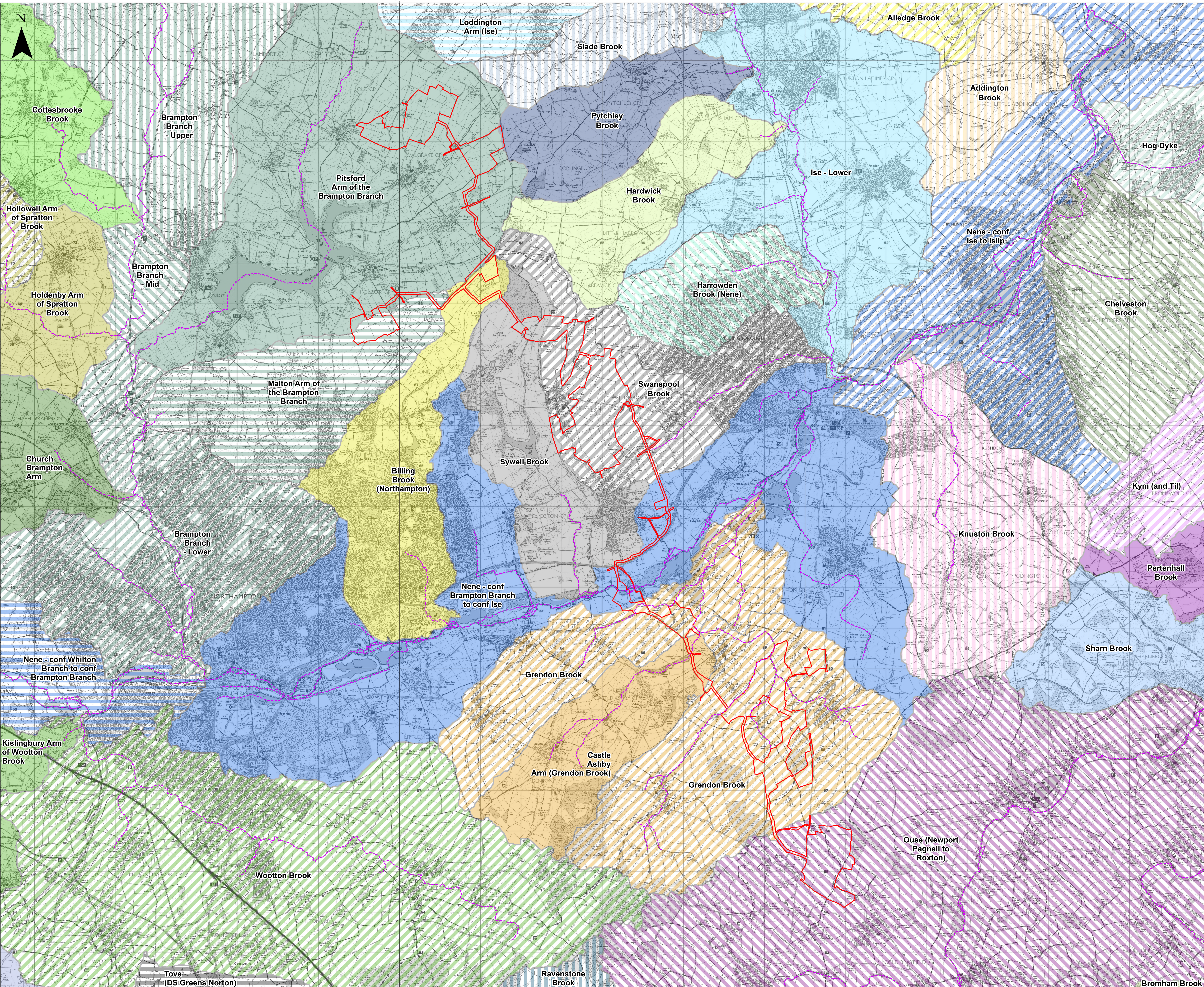
Prepared by: Lanpro

Date: May 2025

Document Reference: APP/GH2.8

APFP Regulation 5(2)(I)





- Key**
- Order Limits
  - Statutory Main River
  - WFD River Water Body Catchment
  - Addington Brook
  - Alledge Brook
  - Billing Brook (Northampton)
  - Bromham Brook
  - Chelveston Brook
  - Church Brampton Arm
  - Cottesbrooke Brook
  - Hardwick Brook
  - Harrowden Brook (Nene)
  - Hog Dyke
  - Knuston Brook
  - Kym (and Til)
  - Ouse (Newport Pagnell to Roxton)
  - Pertenhall Brook
  - Pytchley Brook
  - Ravenstone Brook
  - Sharn Brook
  - Shutlanger Brook
  - Slade Brook
  - Swanspool Brook
  - Sywell Brook
  - Tove (DS Greens Norton)
  - Ise - Lower
  - Ise - Upper
  - Loddington Arm (Ise)
  - Nene - conf Brampton Branch to conf Ise
  - Nene - conf Ise to Islip
  - Nene - conf Whilton Branch to conf Brampton Branch
  - Brampton Branch - Lower
  - Brampton Branch - Mid
  - Brampton Branch - Upper
  - Platford Arm of the Brampton Branch
  - Malton Arm of the Brampton Branch
  - Grendon Brook
  - Castle Ashby Arm (Grendon Brook)
  - Holdenby Arm of Spratton Brook
  - Hollowell Arm of Spratton Brook
  - Ravensthorpe arm of Spratton Brook
  - Wootton Brook
  - Kislingbury Arm of Wootton Brook

Layers: Environment Agency, 2025; Lanpro, 2025; IGR, 2025  
Base map: Reproduced from Ordnance Survey digital map data © Crown copyright 2025. All rights reserved. License number 0100031673

0 1 2 3 4 Kilometers  
Scale: 1:30,000@ A0

APFP Regulation: 5(2)(i)	Application Doc No. GH2.8
Ref: P3535_LPR_ZZ_XX_DR_Z_0277	Date: 28/02/2025
Drawn by: BH	Checked by: HP

**Waterbodies and River Basin Management Plan**  
Revision A

